

From SAFIR2014 to SAFIR2018 – what changes?

Marja-Leena Järvinen

SAFIR2014 FINAL SEMINAR

19.-20.3.2015

Hanasaari, Finland

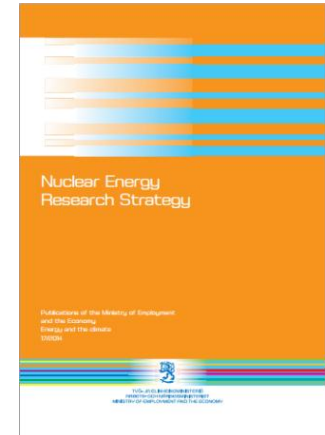
SAFIR2018 Framework Plan

Nuclear Energy Research Strategy, TEM 17/2014

- Recommendation 1 , Research in programs
 - a) Current national research programs on nuclear safety and waste management
 - b) National research in radiation safety
 - c) National research on future nuclear energy (fission and fusion)

National Nuclear Power Plant Safety Research 2015-2018, SAFIR2018 Framework Plan

- task force to develop the framework program 2nd April to 30th June 2014
- all the stakeholders involved, about 40 experts
- call for proposals and nomination of the management board in September 2014



SAFIR2018

Mission

National nuclear safety research develops and creates expertise, experimental facilities as well as computational and assessment methods for solving future safety issues.

Vision

The SAFIR2018 research community is a vigilant, internationally recognised and strongly networked competence pool that carries out research on topics relevant to the safety of Finnish nuclear power plants on a high scientific level and with modern methods and experimental facilities.

Organization of the SAFIR2018 program

MANAGEMENT BOARD

- Responsible of the programme as a whole, its results, and that it follows the nuclear energy act
- STUK (chair), utilities, VTT, universities, TEM, Tekes, ... to be nominated by TEM

RESEARCH AREA STEERING GROUPS

- Planning of research, evaluation of research proposals, establishing of reference groups, follow-up of the results and financing of the projects
- STUK (chair) and the utilities operating in the nuclear engineering area

REFERENCE GROUPS

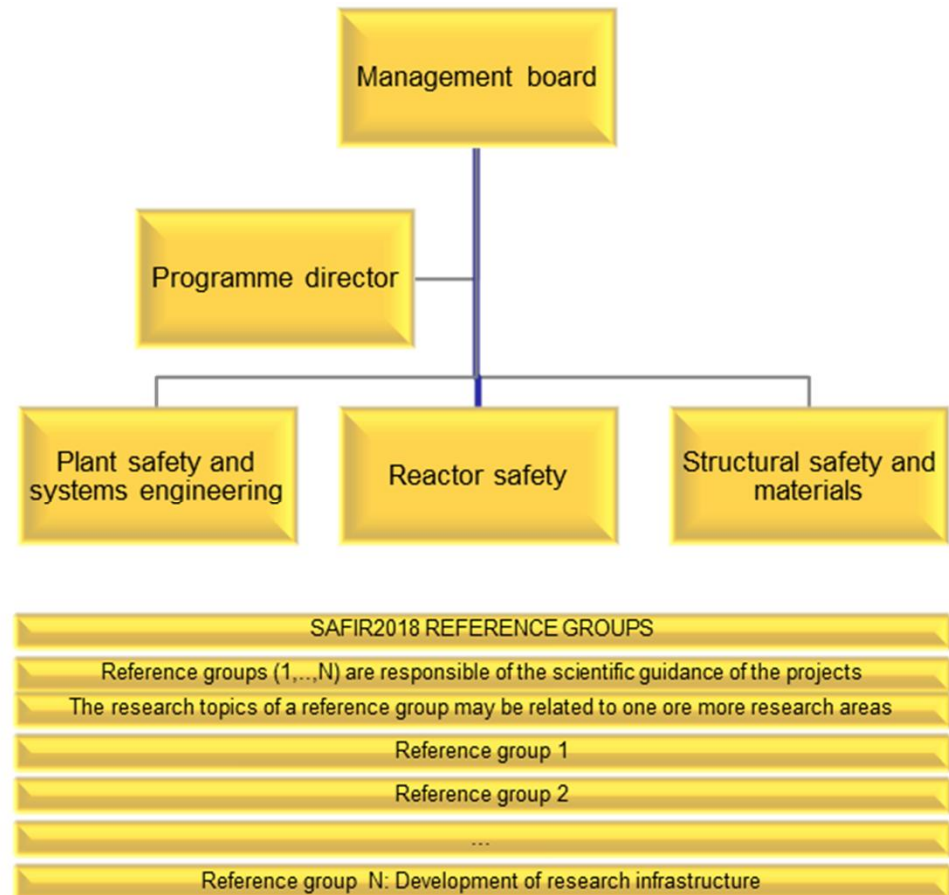
- Scientific steering of research projects in the defined areas
- Reference groups and the related projects can cover one or more research areas
- STUK, utilities, research organisations, other experts

PROJECTS

- Implementation of the research
- Bigger projects than in SAFIR2014 (e.g., 300-400 k€ /year)

ADMINISTRATION

- Programme director and project coordinator

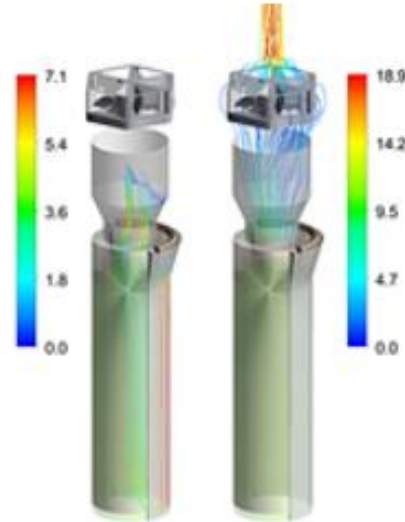


The SAFIR2018 projects 2015 and reference groups

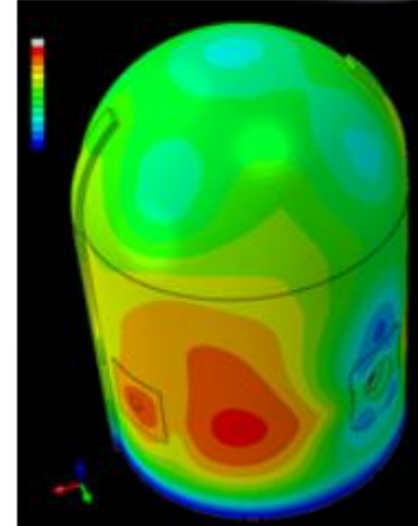
Reference Group	Projects	Comments
RG1 Automation, organisation and human factors	CORE (SG1) MAPS (SG1) SAUNA (SG1)	SG1 area
RG2 Severe accidents and risk analysis	EXWE (SG1), PRAMEA (SG1) CASA (SG2), CATFIS (SG2) ESPIACS (SG3), FIRED (SG3), NEST (SG3)	SG1, SG2 and SG3 areas
RG3 Reactor and fuel	KATVE (SG2), MONSOON (SG2), NEPAL15 (SG2), PANCHO (SG2), SADE (SG2)	SG2 area
RG4 Thermal hydraulics	COVA (SG2), INSTAB (SG2), INTEGRA (SG2), NURESA (SG2), USVA (SG2)	SG2 area
RG5 Structural integrity	FOUND (SG3), LOST (SG3), MOCCA (SG3), THELMA (SG3), WANDA (SG3)	SG3 area
RG6 Research infrastructure	INFRAL, JHR, REHOT	A special role



Plant safety and systems engineering



Reactor safety



Structural safety and materials

<http://safir2018.vtt.fi/>

Thank you!